

Romanian Energy Center

Objectives and Activities



Romanian Energy Center

2

The members of CRE are:

ELECTRICA S.A.

EMON ELECTRIC S.A.

ENERGOBIT

EXIMPROD S.A.

HIDROELECTRICA S.A.

IMA-PARTNERS

NUCLEARELECTRICA S.A.

RETRASIB SIBIU

SC MONSSON INVEST GROUP

TERMoeLECTRICA S.A.

TRACTEBEL

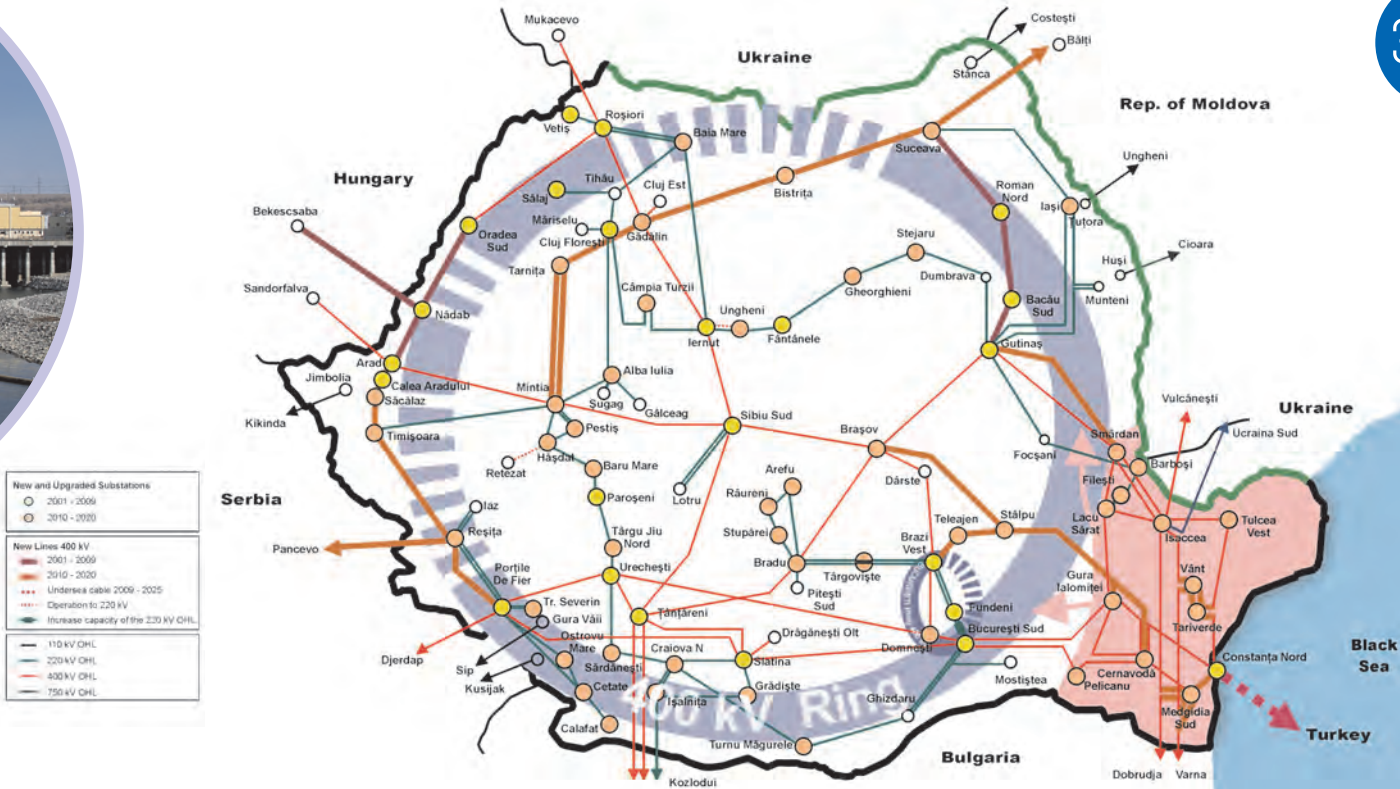
TRANSELECTRICA S.A.

BURSA ROMANA DE MARFURI S.A.



Transmission grid infrastructure

From a traditional grid to a market - oriented, smart grid



The transmission grid: public ownership of the State;
 49 years concession agreement for Transelectrica, starting in 2004,
 royalty 1/1000 from transmission revenue



EUROPEAN UNION

Romanian Power Sector - the structure -

4



PARLIAMENT

OPCOM

ROMANIAN COMMODITIES EXCHANGE

Ministry of Economy

ANRE

Areas: GENERATION

TRANSMISSION

DISTRIBUTION

Hydroelectrică



Nuclearelectrică



Termoelectrică



Electric power plants Bucuresti

Electric power plants Deva

CE Turceni

CE Rovinari

CE Craiova

New GENCOs

TRANSELECTRICA



ENEL Distribution Banat

ENEL Distribution Dobrogea

ENEL Distribution MS

E.ON Distribution Moldova

CEZ Distribution (Oltenia)

ElectricaMN - Distribution

ElectricaTS - Distribution

ElectricaTN - Distributione



ACADEMICS R&D

Tractebel Engineering S.A 

ISPE

ISPH


ICEMENERG

MANUFACTURER DEVELOPER SERVICES


Energobit 

Emon Electric 

Energomontaj

Retrasib 

Ima Partners 

Eximprod 

Romelectro

Electroputere

Electromontaj

Monsson Invest Group 

Romenergo

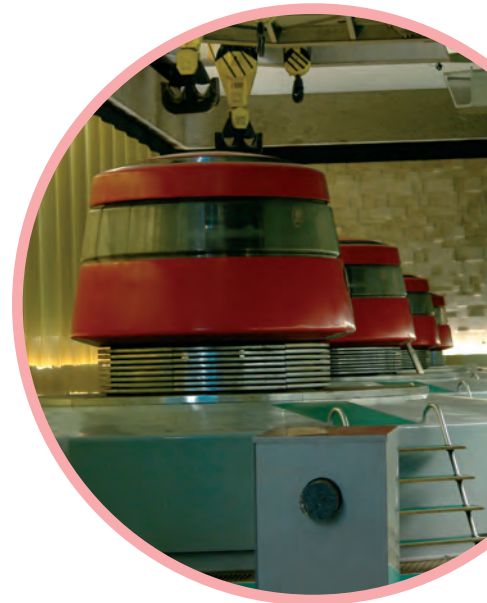
Electroalfa

Nova Industrial



OBJECTIVES

6



Promoting the participation of Romanian institutions and companies to the decision-making process of European institutions, their participation into European partner



CRE is a non-profit professional association with the following objectives:

Analyzing and distributing key information related to the energy sector at EU level

Facilitating access for members to strategic, political, technical, legislative information related to the energy sector

ACTIVITIES

LOBBYING for the benefit of the Romanian state owned and private organizations in the energy sector; including lobbying to participate in European partnerships;

DISTRIBUTING the relevant information and decisions in the energy domain;

ADDRESSING strategic, political, technical, social, legislative and institutional elements that are directly or indirectly connected to the European and national energy sector;

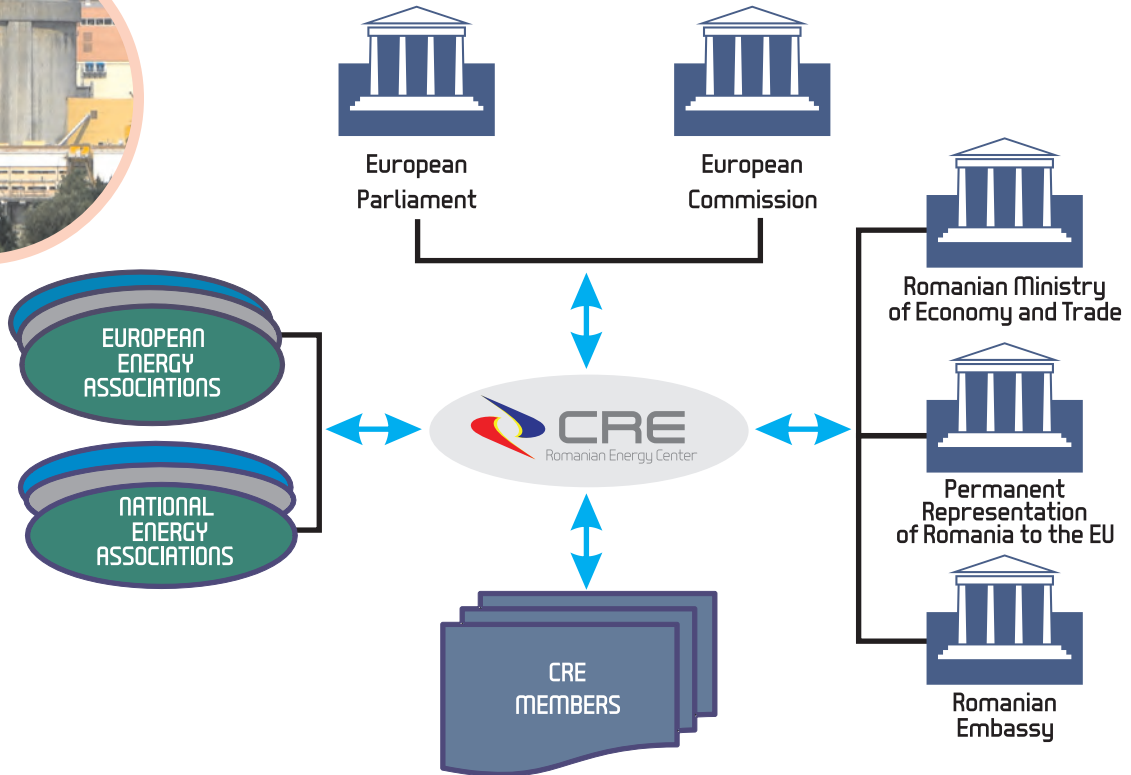
FACILITATING relations between CRE members and other relevant international organizations in the energy sector;

PROMOTING activities in the energy domain in close cooperation with European institutions;



European dimension – relationships

8



FUTURE ACTIVITIES

Press Conference – Launching Romanian Energy Center activities in Bucharest – December 2011

Opening Romanian Energy Center new Brussels office on Wednesday, 25 April 2012

Romanian Energy Day Event – September 2012 in Brussels

Building CRE's image – interviews, publications and media advertising



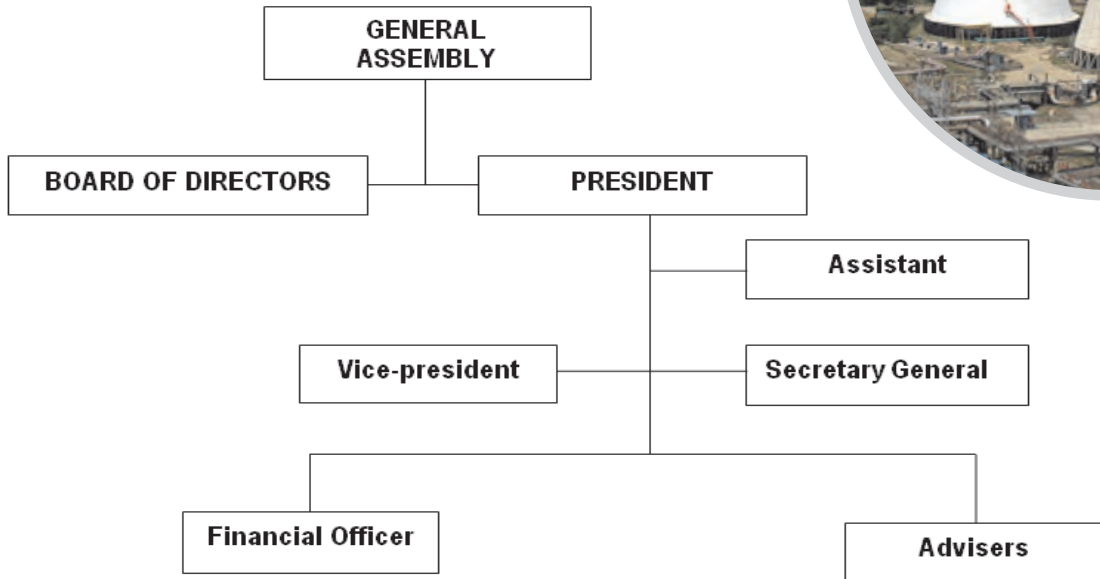
POTENTIAL PROJECTS

10

1. Training programm of CRE-members personnel
2. Executiv Master of Business Administration in European Utility Management
3. Black Sea Regional Center of Excellens on Renewable energy
4. Smart Cities/Pilot Project
5. Virtual Power Plant/Pilot Project
6. Energy Bank



ORGANISATION CHART





Rue Godecharle 8 bte 49/Ixelles BRUSSELS - BELGIUM
mobile: +40 744 574 631
sgal07@crenerg.org
www.crenerg.org